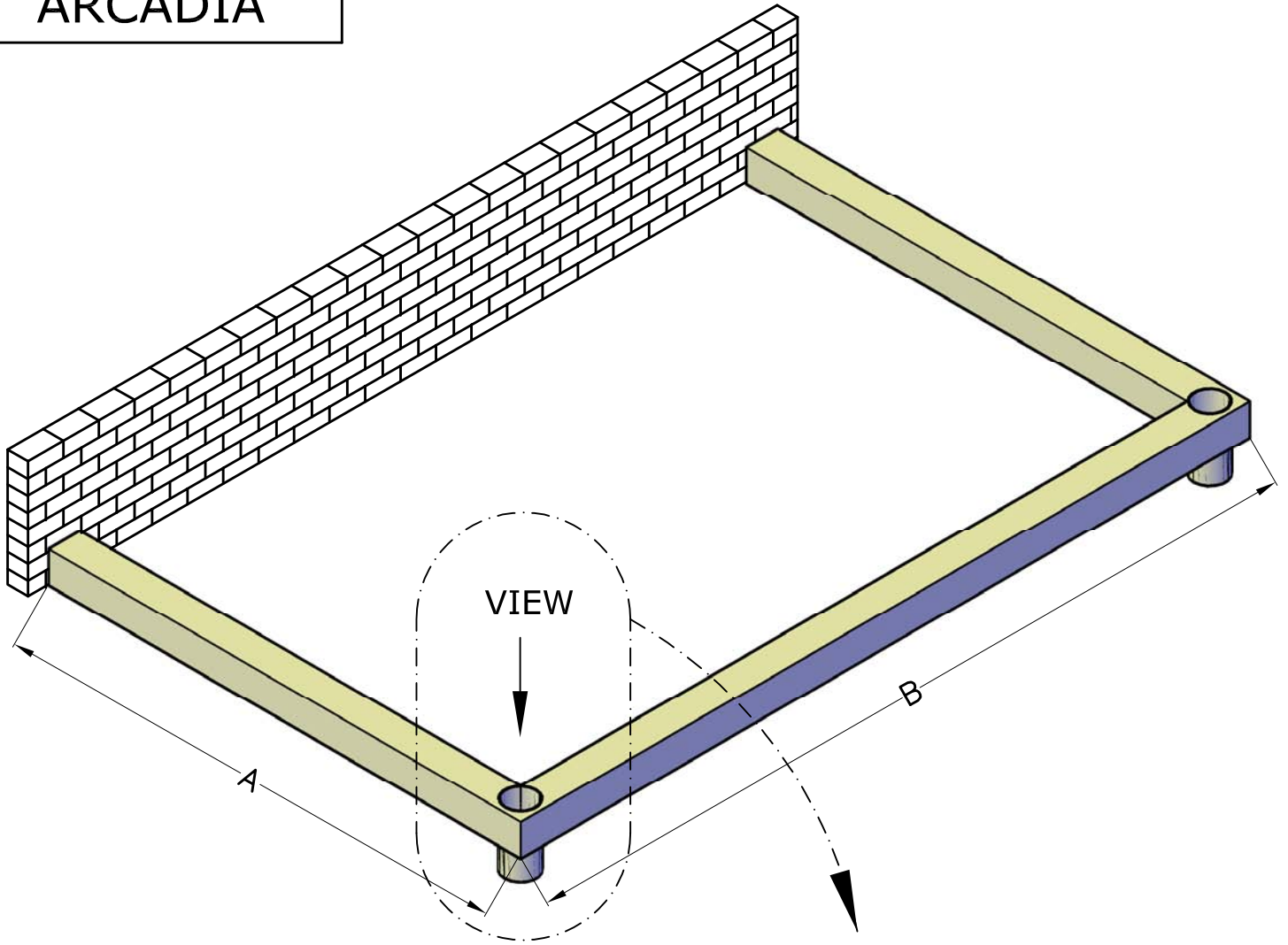
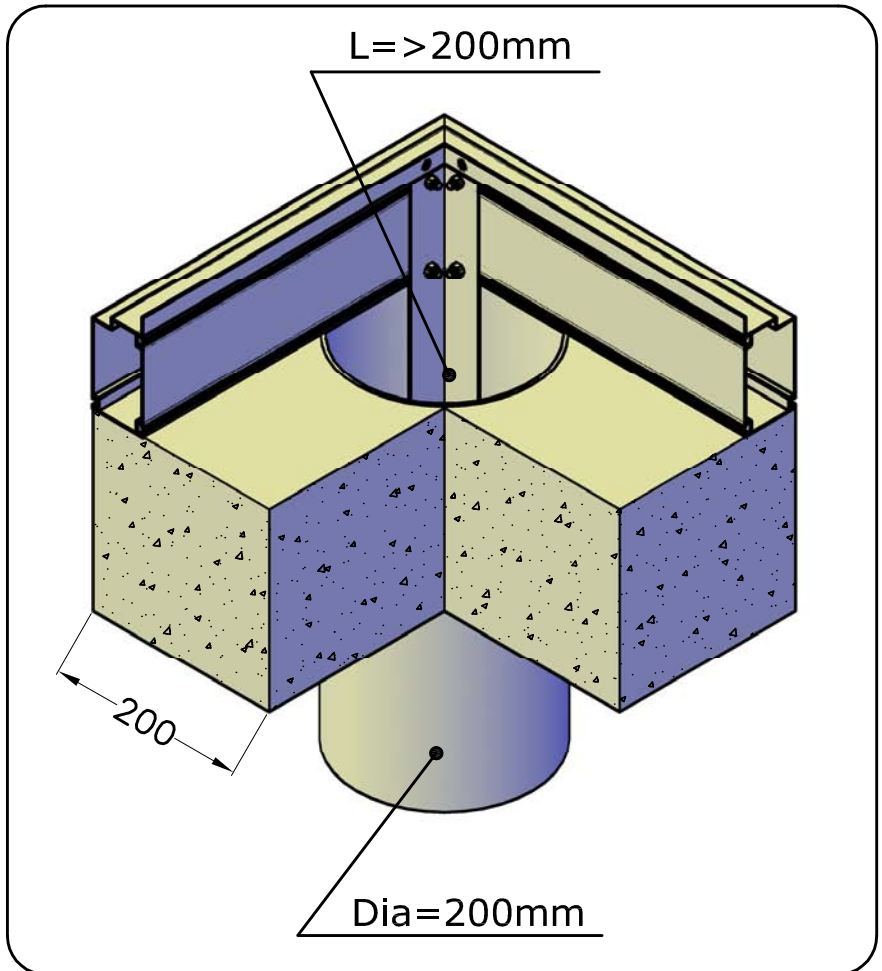


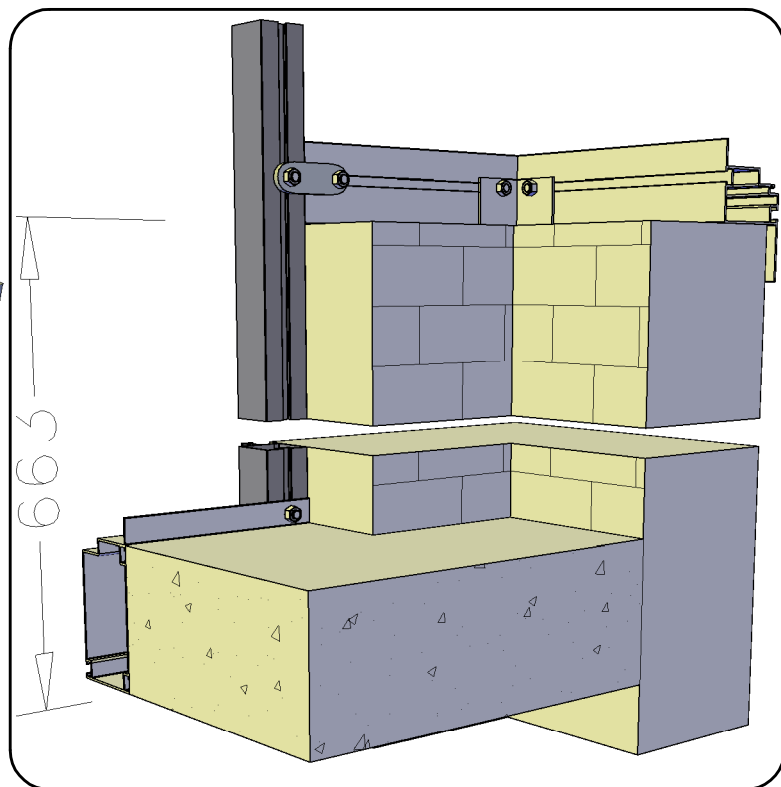
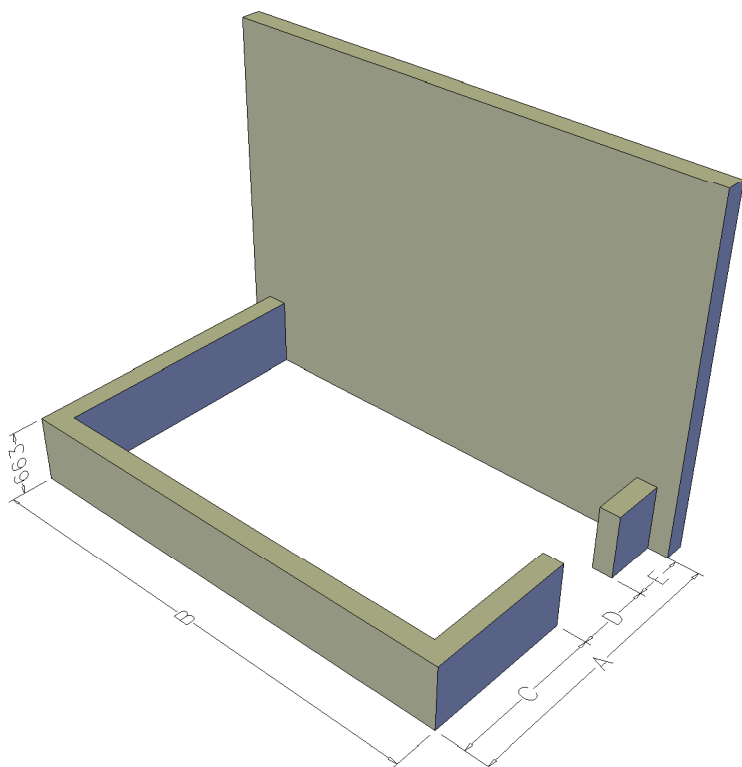
" ARCADIA "



A	X	B
829		2360
1567		3100
2305		3840
3043		4580
		6060

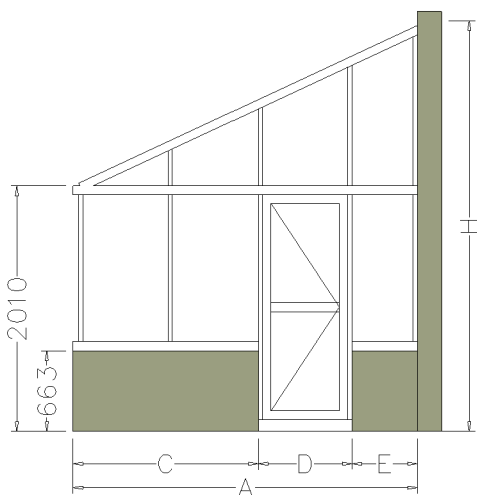


" ARCADIA - SPECIAL"

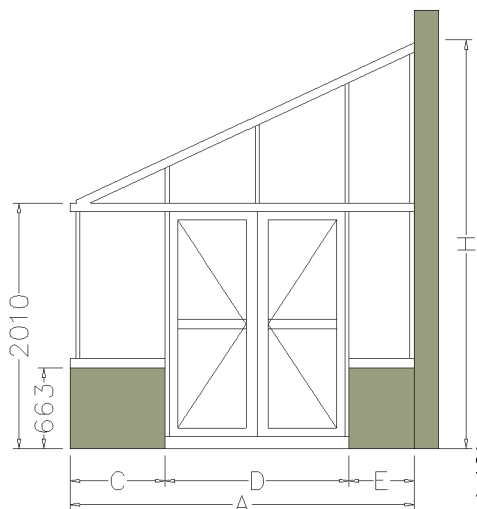


!! A = C + D + E !!

A	H(min)	X	B
819 (Arcadia = 829)	(2420)		1602 (Arcadia = 1622)
1557 (Arcadia = 1567)	(2790)		2340 (Arcadia = 2360)
2295 (Arcadia = 2305)	(3090)		3080 (Arcadia = 3100)
3033 (Arcadia = 3043)	(3460)		3820 (Arcadia = 3840)
			4560 (Arcadia = 4580)
			5298 (Arcadia = 5318)
			6040 (Arcadia = 6060)



A	C	D	E
819	46	773	0
1557	784	773	0
2295	784	773	738
	1522	773	0
3033	784	773	1476
	1522	773	738



A	C	D	E
1557	46	1511	0
2295	46	1511	738
	784	1511	0
3033	784	1511	738
	1522	1511	0

Alle afmetingen zijn de maximale maten buitenkant van de muurtjes. Er dient exact gewerkt te worden volgens dit plan met een tolerantie van -10mm!
 Given are max. dimensions, outside of dwarf wall. To be constructed exact to this plan; tolerance -10mm!
 Tous les dimensions sont le maximum extérieur du muret! Ils seront construits en exact correspondance de ce plan: -10mm!
 Alle maten zeigen die maximale Aussenmasse der Mauer an! Das Mauern sollte genau erfolgen, da es nur eine Toleranz von 10mm gibt!